

Studio M Pro OTG

快速入门指南

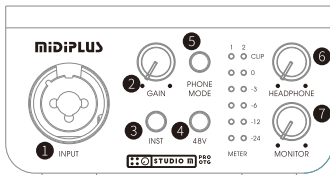
简介

感谢您选择Studio M Pro OTG。这是一款一进二出的音频接口，带有手机OTG接口及3.5mm手机接口，为您提供更快捷方便的直播体验。具备一路高品质话放与24bit/192kHz高精度采样，支持Windows低延迟ASIO 驱动及Mac下免驱使用。在开始使用之前请阅读此手册，以帮助您快速了解Studio M Pro OTG的基本功能。

产品特性

- 24bit/192kHz高精度的一进二出的音频接口
- 一路Mic/Line/Hi-Z混合输入接口，带48V幻象电源和独立增益调节旋钮，高阻抗模式可接吉他贝斯等乐器
- 输入增益旋钮带双色电平指示灯，方便观察输入电平
- 可独立调节耳机音量和主输出监听音量
- 两路LED电平表，实时显示输出电平
- 支持手机OTG及3.5mm接口连接
- 可独立控制OTG输入/输出信号开关
- 高速USB2.0 (支持3.0) 接口

硬件功能



1. Mic/Line/Hi-Z混合输入接口:用于通过XLR连接麦克风或通过6.35mm 插头连接乐器(例如电吉他)或线路输入
2. 输入增益旋钮:用于调节麦克风、乐器或线路输入信号的增益量，逆时针

旋转减小增益量, 顺时针旋转增加增益量, 旋钮灯为输入电平指示灯, 过载时亮红色

3. 乐器输入开关按钮: 用于切换6.35mm输入接口的乐器/线路输入, 按钮灯熄灭时为线路输入, 按钮灯点亮时为乐器输入

4. 48V幻象电源开关: 开启输入1通道的48V幻象电源供电

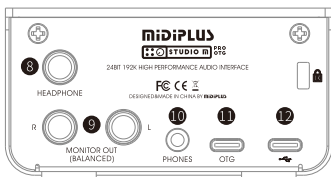
5. Phone Mode开关: 按钮亮黄色表示手机OTG和声卡互通信号, 按钮灯熄灭表示手机和声卡互不传输

①短按开关: 按压开关小于两秒时, 按钮红灯亮表示开启手机OTG信号传输至声卡, 红灯灭则关闭

②长按开关: 按压开关大于等于两秒时, 按钮绿灯亮表示开启声卡音频信号传输至手机OTG, 绿灯熄灭则关闭

6. 耳机音量旋钮: 用于调节耳机输出的音量, 逆时针旋转减小音量, 顺时针旋转增加音量, 旋钮灯为USB识别指示灯, 连接电脑且被正确识别时亮灯

7. 主音量旋钮: 用于调节主输出的音量, 逆时针旋转减小音量, 顺时针旋转增加音量



8. 耳机接口: 6.35mm立体声耳机输出接口

9. 主输出接口: 用于连接主监听音箱

10. 3.5mm手机连接接口: 使用3.5mm 双头TRRS线连接手机

11. Type-C手机OTG连接接口: 使用Type-C线连接手机

12. USB接口: 用于连接电脑

开始使用

1. 连接: 使用附带的USB连接线将Studio M Pro OTG接到电脑并被正确识别后, 耳机旋钮灯将会亮起

2. 安装驱动

Windows用户: 访问 <http://www.midiplus.com/cn/support.aspx?1d=1>
下载并安装最新的驱动

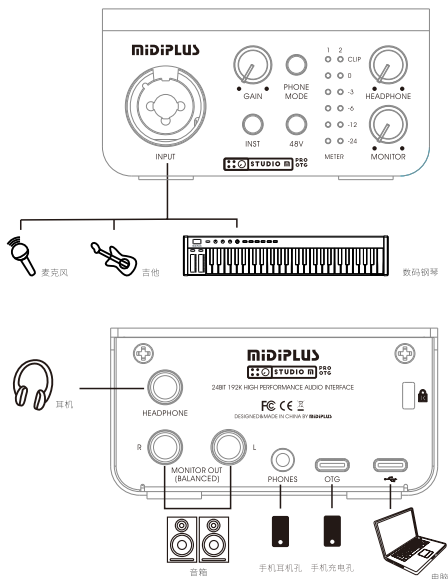
MacOS: 无需安装驱动

3. 设置默认声音设备

Windows用户: 转到设置→系统→声音, 然后选择Studio M Pro OTG
为输入/输出设备

MacOS用户: 转到系统偏好设置→声音, 然后选择Studio M Pro OTG
为输入/输出设备

4. 连接示例



产品规格

型号	Studio M Pro OTG
位深度/采样率	24bit/192kHz
I/O接口	1个 Mic/Line/Hi-Z 混合接口 1个6.35mm监听耳机接口 2个6.35mm监听音箱接口 1个3.5mm手机OTG接口 1个Type-C手机OTG接口 1个Type-C电脑接口
按键	1个INST乐器高阻抗开关 1个手机OTG功能开关 1个48V幻象电源开关
旋钮	1个输入增益旋钮 1个主输出音量旋钮 1个监听耳机音量旋钮
尺寸	116mm*90mm*46mm
附件	USB线、快速入门手册、音频转接头、信息卡、 双头3.5mm TRRS线

Studio M Pro OTG

Quick Start Guide

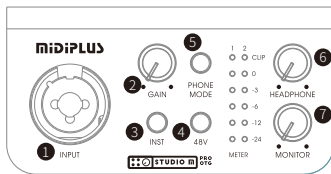
Introduction

Thank you for choosing Studio M Pro OTG audio interface. Studio M Pro OTG is a 1 in/2 out USB audio interface, with built-in OTG port and 3.5mm phone jack, providing you with a faster and more convenient live streaming experience. One high quality microphone preamp and 24bit/192kHz high resolution sampling rate, support low-latency ASIO driver on Windows OS and will work straight away without needing to install any drivers on macOS. Please read this manual before you start using, to help you quickly understand the basic operations and features of Studio M Pro OTG.

Features

- 1 in/2 Out USB audio interface with 24 bit/192 kHz audio resolution
- 1 Mic/Line/Hi-Z combo input with 48V phantom power supply and Input Gain control
- 2 colors Input level LED
- Independent monitor output volume and headphone volume control
- 2 Level Meters
- Connect to your mobile phone through OTG or 3.5mm jack
- OTG input/output
- High Speed USB 2.0 and bus powered

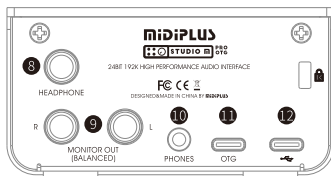
Hardware Features



1. Mic/Line/Hi-Z combo input: Connect microphone via XLR or use the 6.35mm jack to connect your instrument (such as electric guitar) or line input
2. Input gain control: Adjust the gain level of microphone, instrument or line input. Rotate counterclockwise to reduce the gain level and clockwise to

increase the gain level

- Instrument input switch button: Switch instrument/line input of 6.35mm input. Line in when the button light is off, instrument in when the button light is on
- 48V phantom power switch: Turn on 48V phantom power supply of input 1/2 channel
- OTG switch: The button lights Yellow means both the OTG Input and Output are turned on
 - Press the switch, the button lights Red means turn on the route from mobile phone to OTG, press the switch twice to turn off the route
 - Long press the switch over 2 seconds, the button lights Green means turn on the route from OTG to mobile phone, long press the switch again to turn off the route
- Headphone output level control: Adjust the headphone output level, rotate counterclockwise to reduce the level, and rotate clockwise to increase the level, and the knob light is the USB status LED
- Monitor output level control: Adjust the monitor outputs level. Rotate counterclockwise to reduce the level and clockwise to increase the level



- Headphone output: 6.35mm stereo output, connect to your headphone
- Monitor output: Connect to your monitor
- 3.5mm Phone jack: Connect to your mobile phone via the 3.5 TRRS cable
- Type-C OTG port: Connect to your mobile phone via the Type-C cable
- USB port: Connect to your computer

Start Using

- Connect

Connect the Studio M Pro OTG to computer by using the included USB A to USB C cable, the USB status LED on Headphone knob will light on.

2. Installation

Windows: Go to <http://www.midiplus.com/cn/support.aspx?id=1> download and install the latest driver.

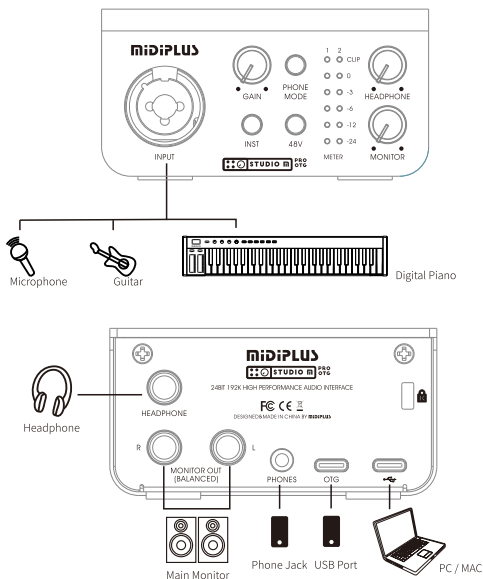
macOS: No need to install any drivers.

3. Setting the default sound device

Windows: Go to Settings > System > Sound and then selecting the Studio M Pro OTG as your device for Input and Output.

macOS: Go to System Preferences > Sound and then selecting the Studio M Pro OTG as your device for Input and Output.

Connection Example



Specifications:

Model	Studio M Pro OTG
Bit depth/Sample rate	24bit/192kHz
I/O	1 x Mic/Line/Hi-Z Combo Input 1 x 1/4" Headphone Output 2 x 1/4" Monitor Outputs 1 x 1/8" Phone jack 1 x OTG port 1 x USB port
Buttons	1 x INST Switch 1 x OTG Switch 1 x 48V Switch
Knobs	1 x Input Gain control 1 x Monitor level control 1 x Headphone Volume control
Dimensions	116mm*90mm*46mm
Accessories	1 x USB Cable, 1 x Quick Start Guide 1 x 1/4" to 1/8" adapter 1 x Information paper 1 x 1/8" to 1/8" TRRS cable